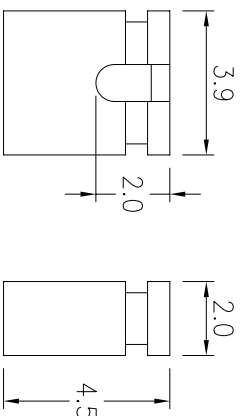
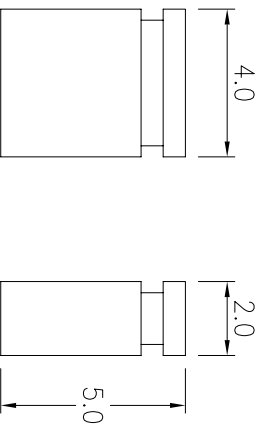


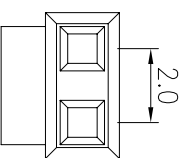
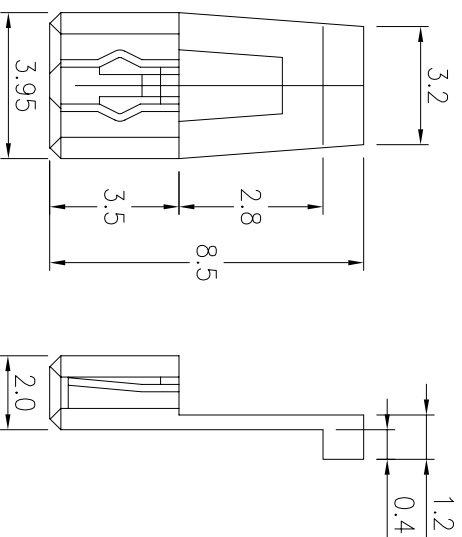
M Type:OPEN



M Type:CLOSE



H Type



**FEATURE**

MATE WITH 2.0MM GRID MALE HEADER CONNECTORS

**MATERIAL**

INSULATOR: THERMOPLASTIC UL94V-0  
CONTACT: PHOSPHOR BRONZE

**SPECIFICATION**

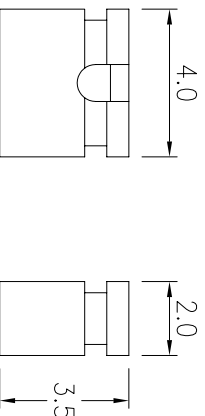
CURRENT RATING: 1A  
CONTACT RESISTANCE: 20mΩ MAX.  
INSULATION RESISTANCE: 5000MΩ MIN.  
DIELECTRIC WITHSTANDING VOLTAGE: 500V AC/DC  
OPERATING TEMPERATURE: -40°C TO +105°C

**HOW TO ORDER**

MH311X-X

T TYPE NUMBER  
 NORMAL PART  
 G: ROHS PART  
 V: FOR LEAD FREE PROCESS  
 BASE NO.

S Type



REV.	A	NEW RELEASE	12/06/05*	DR.	KELLY	RE.	APP.	GENERAL TOLERANCE	SIZE	P/N	MH311 SERIES	
REV.		REV. RECORD	DATE	CHK.				0.0 ±.30	A4	REV.	A	
								0.00 ±.20			SHEET NO.	
				MATERIAL				DESCRIPTION:				
				SEE NOTE				2.00mm Mini Jumper				
				UNIT				LONG CHU ELECTRONICS CO. LTD				
				mm				龍竹企業股份有限公司				